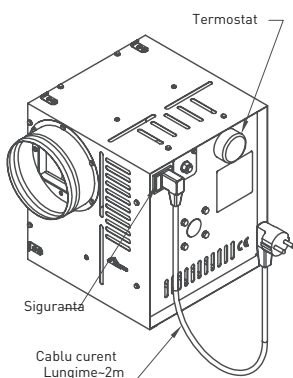


Ventilator/Turbina



Ventilatorul este destinat pentru a face distributia de aer cald din hota semineului in alte incaperi.

Ventilatorul este izolat termic si acustic si dispune de un termostat. Cand temperatura aerului ajunge la temperatura setata pe termostat acesta porneste automat. Cand temperatura aerului cade sub temperatura setata acesta se opreste.

Aplicare:

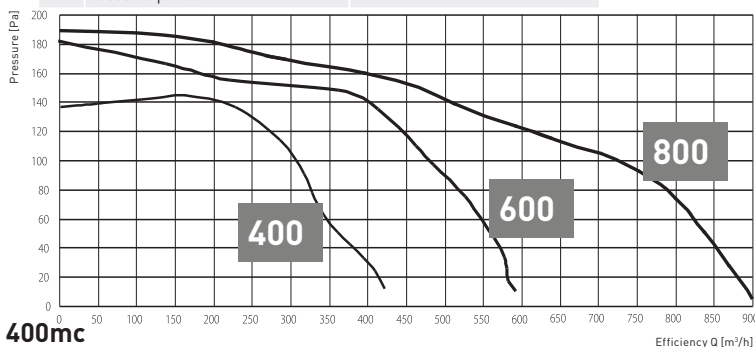
- distributia aerului cald
- a se folosi doar la interior

Date tehnice

Type	Dimensiune lungime/adancime/inaltime	Diametru	Greutate[kg]
400mc	290 x 280 x 270	Ø125	5.0
600mc	307 x 303 x 302	Ø150	7.0
800mc	363 x 335 x 325	Ø150	8.0

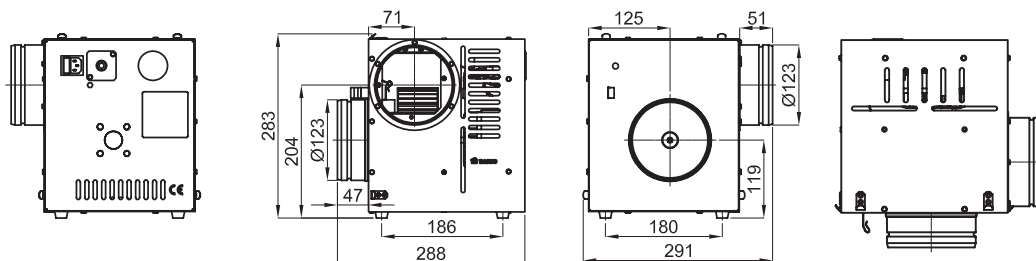
Destinatie	0	0 - distributie de aer cald
Material	OC	OC - otel galvanizat

No.	Date tehnice	AN1	AN2	AN3
1	Eficienta [m³/h]	400	600	800
2	Putere [W]	50	80	118
3	Voltaj V/Hz	230/50		
4	Amperaj [A]	0.25	0.4	0.6
5	Zgomot[dB]	65		
6	Temperatura maxima de lucru [°C]	150		
7	Variatii termostat °C]	10 - 150		
8	Temperatura ambientala maxima°C]	50		
9	Clasa de protectie	IP20		

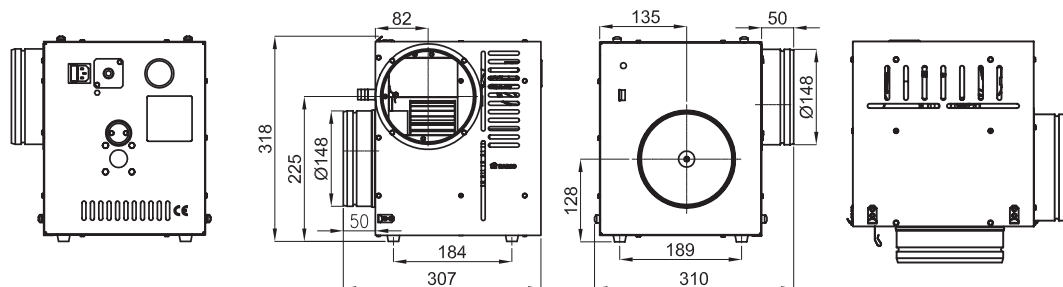


Dimensiuni Ventilator/Turbina

Ventilator 400mc



Ventilator 600mc



Ventilator 800mc

